



Senate E-newsletter

Discover the University Senate

Notes from the May Senate Meeting

At the May 3, 2012 Senate Transition Meeting, over 70 recently elected faculty, staff, and student Senators began their Senate terms. Chair-Elect Martha Nell Smith officially assumed the role of Chair for the 2012-2013 year, and Vincent Novara (Faculty, Libraries) was elected as the new Senate Chair-Elect. In addition, Senators cast their votes to elect new members to the **Senate Executive Committee** and **Senate Committee on Committees**, as well as the **University Athletic Council**, the **Council of University System**

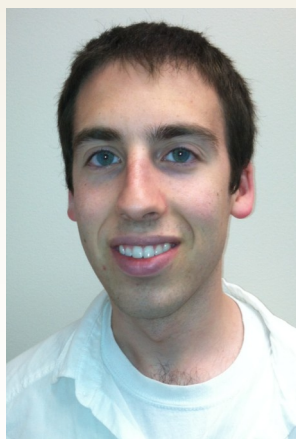
Faculty (CUSF), and **Campus Transportation Advisory Committee (CTAC)**. Following the elections, Senators heard two special order presentations: Kevin Anderson, Director of Intercollegiate Athletics, presented the Department of Athletics' Vision, and Carlo Colella, Associate Vice President of Facilities Management, presented Purple Line Design Considerations on Campus. Senators had the opportunity to ask questions and provide feedback on both of these important topics.



The Senate is one of the largest and most powerful governing bodies on campus.

University Senate = Shared Governance. Faculty, staff, students, and administrators work together to better our University.

The Senate debates and votes on policy-related issues and other governing aspects of the University. The Senate **directly** advises the **University President**.



As part of this campus community, I was looking for a place in which I could get involved and contribute. Serving as a member of the Senate Equity, Diversity, & Inclusion (EDI) Committee has afforded me the chance to learn about issues affecting our campus that one would not necessarily see every day.

-Judah Kerbel, Undergraduate Student

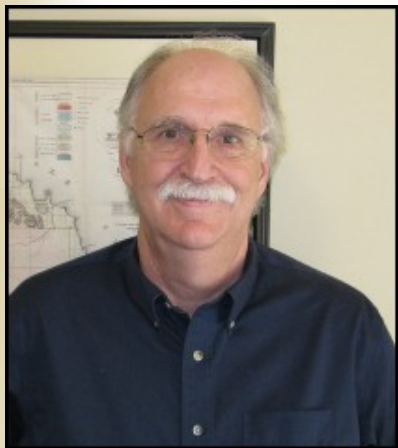


The Senate Committees are currently writing the annual committee reports which summarize their **completed and pending legislation items from the 2011-2012 academic year**. In total, over 30 legislation items were sent forward to the Senate from the Senate committees during the Fall 2011 and Spring 2012 semesters. About a dozen legislation items will carry over to the 2012-2013 year, and a small number of items are pending approval from higher bodies before implementation. While most committees will not be in session over the summer months, the **Committee on Committees** is just beginning its work placing volunteers on Senate Standing Committees to fill vacancies left by outgoing members. The Committee on



Committee News

Committees will contact all volunteers by the end of June 2012 to inform them of whether or not they were placed on a Senate committee. Faculty volunteers are still needed for many of the committees—please contact the Senate Office at senate-admin@umd.edu if you are interested!



From the Past Senate Chair

Intercollegiate Athletics be granted representation on the Senate. In addition, the Senate formed joint task forces with the Administration to review policies on non-tenured staff, investigate how the University should address open access issues related to scholarly outputs, and to review policies and procedures on sexual harassment. It was an honor to serve as Chair of the University Senate over the past year, and I wish my successors similar success during the upcoming years.

Eric Kasischke

Thanks to all the hard work by Senators, members of Senate Committees, and Senate staff, the University Senate achieved a great deal over the past year. These achievements included recommending that the University provide benefits to same sex domestic partners and for parental leave, adopt a campus-wide helmet policy for motor scooter users, develop guidelines for continuing review of Plans of Organizations, and that the Department of

2012-2013 Senate Meeting Schedule *Stamp Student Union*

Thursday September 20, 2012
Wednesday, October 10, 2012
Thursday, November 1, 2012*
Wednesday, December 5, 2012

Thursday, February 14, 2013
Wednesday, March 6, 2013
Thursday, April 4, 2013
Thursday, April 17, 2013
Thursday, May 2, 2013

*President's State of the Campus

Submit a Proposal to the Senate

Current Senate Legislation:

Revisions to the School of Architecture, Planning, and Preservation Plan of Organization

Senate Document 11-12-41

Proposed Policy for Parental Leave for Staff

Senate Document 11-12-35

Proposal to Implement a Retroactive Withdrawal Policy

Senate Document 11-12-30

Expansion of Promoting Responsible action in Medical Emergencies

Senate Document 11-12-22

Proposal to Change the Committee on the Review of Student Fees (CRSF) Operating Procedure

Senate Document 11-12-12

Proposal to Clarify and Improve Student Class Selection

Senate Document 11-12-11

Click on any legislation item above for more details. To view all Senate Legislation: **[Click Here](#)**

Any member of the campus community may submit a proposal to the University Senate to review University policies[★] and procedures or to suggest the creation and establishment of new ones.

To submit an idea or proposal to the Senate, click on a link below to download a blank proposal form in Word or as a PDF.

[Proposal Form \(Word Version\)](#)

[Proposal Form \(PDF Version\)](#)

[Sample Proposal](#)

★ A manual of current University policies can be found here: <http://www.president.umd.edu/policies>

Contact Us

Senate Office

1100 Marie Mount Hall

College Park, Maryland 20742-7541

301-405-5805 (Tel)

301-405-5749 (Fax)

senate-admin@umd.edu